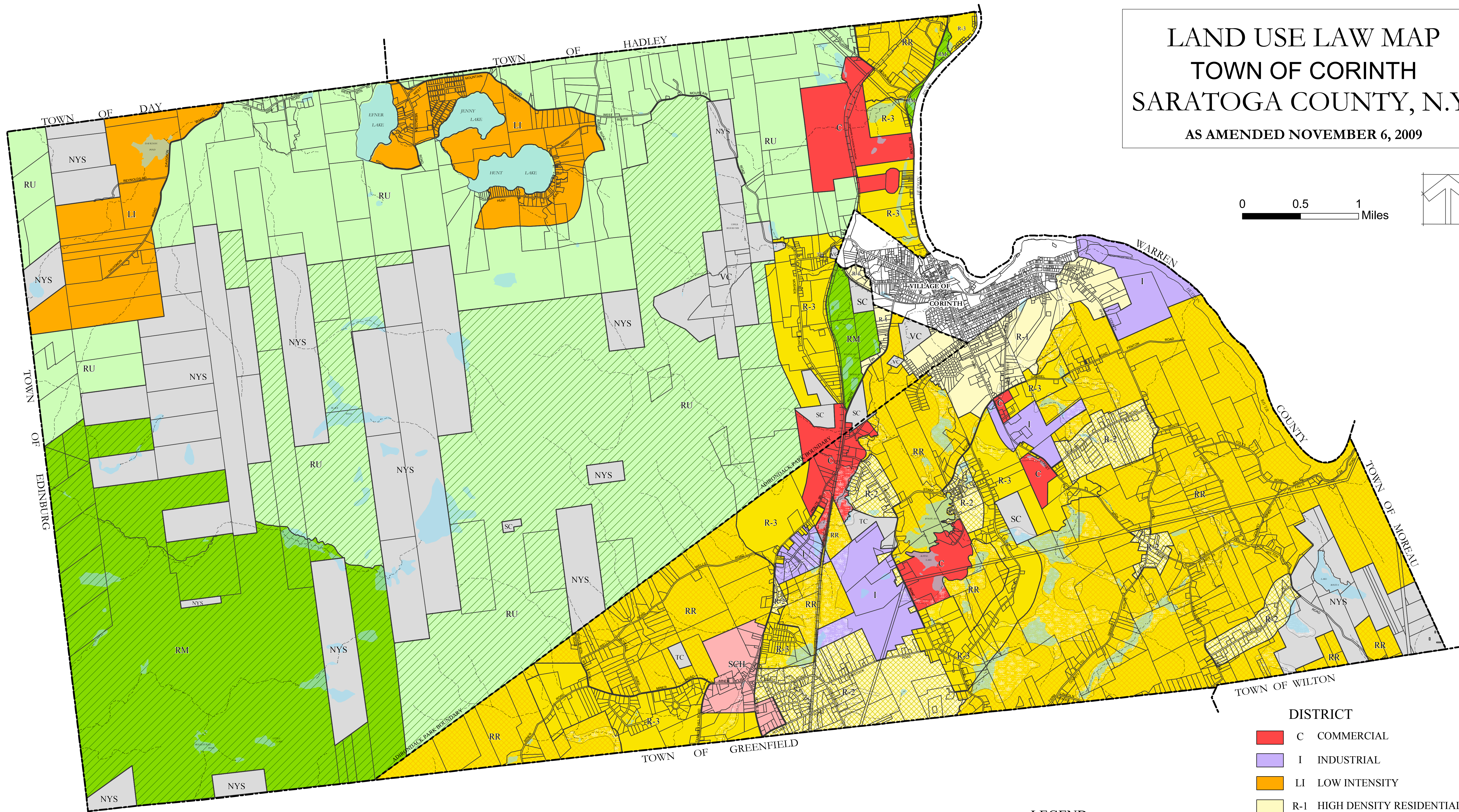
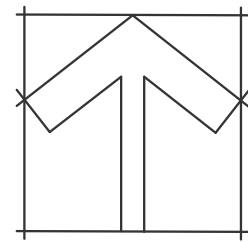


LAND USE LAW MAP TOWN OF CORINTH SARATOGA COUNTY, N.Y.

AS AMENDED NOVEMBER 6, 2009

0 0.5 1 Miles



Zoning Revisions

R-1 High Density Residential to Industrial
Tax Map #74.-2-10.12
Per Town Board

R-3 Moderate Density Residential to R-2 Mixed Residential
Tax Map #86.-1-35.11, 86.-1-35.12, 86.-1-35.2,
86.-1-36.1, 86.-1-37, 86.-1-38, 86.-1-45, 86.-1-52
Per Town Board

PUBLIC LANDS

- NYS NEW YORK STATE
- SC SARATOGA COUNTY
- TC TOWN OF CORINTH
- VC VILLAGE OF CORINTH

LEGEND

- TOWN BOUNDARY
- ADIRONDACK PARK BOUNDARY
- 2005 PARCEL BOUNDARY
- ROAD
- RAILROAD
- HYDROLOGY
- NYSDEC WETLANDS(outside ADK Park)
- WATER BODIES

DISTRICT

- C COMMERCIAL
- I INDUSTRIAL
- LI LOW INTENSITY
- R-1 HIGH DENSITY RESIDENTIAL
- R-2 MIXED RESIDENTIAL
- R-3 MODERATE DENSITY RESIDENTIAL
- RM RESOURCE MANAGEMENT
- RR RURAL RESIDENTIAL
- RU RURAL USE
- SCH SOUTH CORINTH
- OD-1 OVERLAY DISTRICT 1



the LA group
Landscape Architecture
and Engineering, P.C.

Printing Date: 11/6/2009
2:39pm 6400x3600px 4096x4096_land_use_low_110609.mxd
Prepared By: KJH2